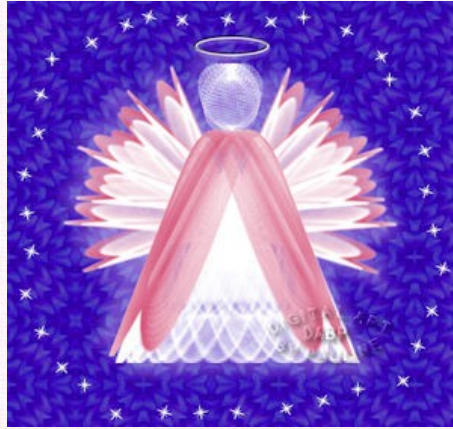


DIGITAL ART BY PAULINE

DIGITAL ART
DABP
BY PAULINE



SINEDOT BIRTHSTONE ANGEL **PAINT SHOP PRO X2 OR OTHER VERSIONS** **LEVEL: INTERMEDIATE**

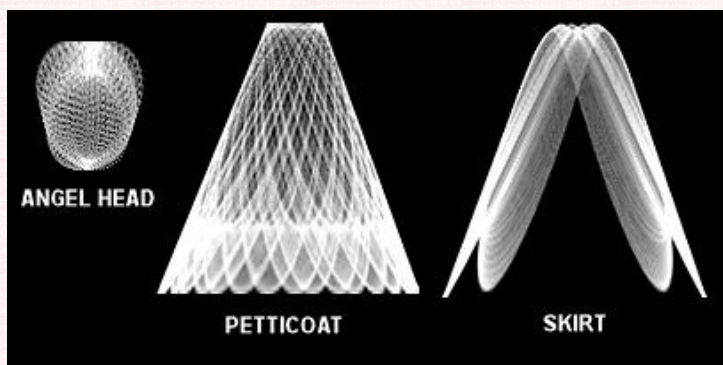
MATERIALS NEEDED: SINEDOTS II PLUG-IN, BIRTHSTONE & CHAIN FILE

Note: This tutorial was originally written by the Deb Dehaven. The copy right now belongs to Mary Lou White. (Wishing Well Tutorials)

You will need to download the zip files for this tutorial, which include angel [birthstones_chain.zipx](#) parts, birthstones and a chain.

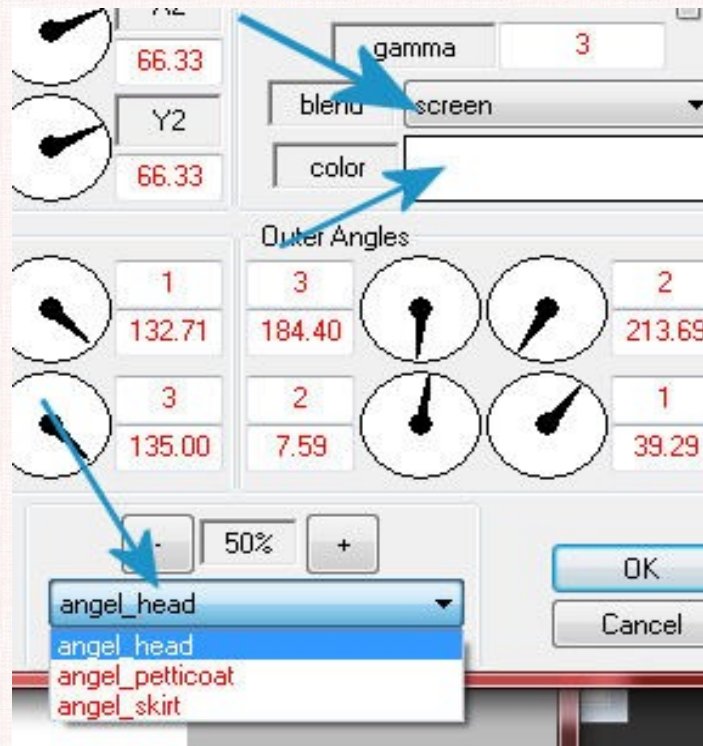
Download them here : Unzip and save your birthstones and chain in your Picture tube folder.

Be sure and file your angel parts in the same folder where you have your Sinedots II installed.

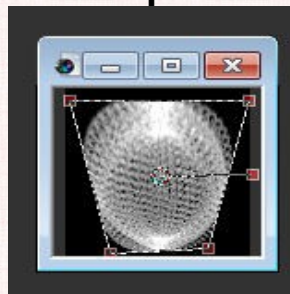


You will also need the plug-in called Sinedots II which can be downloaded free here: [Sinedots](#)

1. Open a new transparent canvas, 100 X 100. Go to DragonFly/Effect/Sinedots II and at the bottom there is a long bar with a drop down list. Choose “angel_head”. Also, on the BLEND drop down list, choose “screen” and color white. (See image below) Click ok.



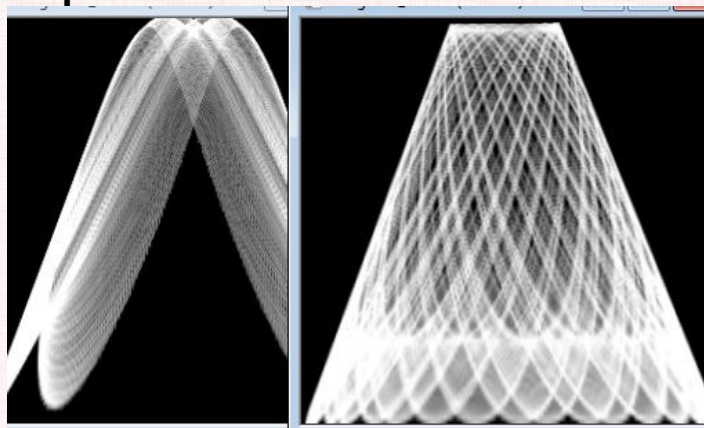
2. Open a new canvas, same size, color black. Copy your first canvas with the angel head and paste it as a new layer on the black canvas. Delete the first canvas. You will be working with the black canvas with the white angel head. Use your pick tool to shape your angel head a bit. Adjust/Sharpness/Sharpen. Minimize this for later.



3. Open a new transparent canvas, 300 X 300. Go to

DragonFly/Effects/Sinedots II and at the bottom, choose “angel_petticoat” from the drop-down list, color=white, blend=screen. Click to apply. Open a new canvas, same size, color black. Copy your image and paste it as a new layer on the black canvas. Delete the first canvas. Use your pick tool and pull in the top lines to make the it more narrow at the top. Adjust/Sharpness/Sharpen. Minimize this, too.

4. Open a new transparent canvas, 300 X 300. Go to DragonFly/Effects/Sinedots II and at the bottom, choose “angel_skirt”, same settings. Click to apply. Open a new canvas, same size, color black. Copy your image and paste it as a new layer on the black canvas. Delete the first canvas. Adjust/Sharpness/Sharpen. Use your pick tool and narrow the top if the angel skirt to make it more like a skirt. Try to keep the top the same width as the petticoat.



Make a duplicate of this canvas for the wings.

For the wings: Click on the duplicate skirt layer. Resize to 50%. with resize all layers unchecked. Rotate left 135 degrees. Minimize this, too.

5. Open a new canvas, black background, 500 X 500. Or you can choose another dark color if you like. Maximize your angel parts. Copy your angel head and paste it as a new layer to your new black canvas. Place it at the center top. Do the same with your angel petticoat and angel skirt. Line up your petticoat and skirt evenly and matching at the top. For this tutorial we will be making a May birthstone angel so we will be using emerald green. Put the color you've selected in you Materials Palette and select your skirt.

Selections/Select all. Selections/Float. Go to your airbrush, size=65, Opacity=10 and gently airbrush the robe until you are satisfied with it. Select none.

6. Select your wing part. Layers/Duplicate so that you have 2 angel wing parts. Image/Free rotate 135 % left on both parts.

Now drag your wing parts together. Click on one layer. Image/Free rotate 22.5% left. Drag your wing parts together again with the inside edges even.



Close the eye on the background layer, click on a wing layer. Layers/Merge Visible. Layers/Duplicate. Image/Free Rotate 22.5 right. Even up the inside edges again. Close the background again. Layers/Merge Visible. Layers/Duplicate again and set this layer aside for now. Click on the original wings. Selections/All. Selections/Float.

Airbrush your wings just like you did with the angel skirt, same settings. Select None. Now click on your extra wings. Image/Resize 90%. Drag this wing so that the inside edges are even with the bottom layer. Close the background eye. Layers/Merge Visible.

Your wings are now ready to place on the angel, so Copy and Paste as a new layer on to the angel. Layers/Duplicate. Image/Mirror. Layers/Arrange/Move down on both wings. At this point you may want to rotate your wings again and move them slightly in toward the middle. Adjust it until you're happy with it. When you are satisfied, close the background eye again, click on a layer and go to Layers/Merge visible. Now you are ready to add the birthstones.

7. Open your birthstones that you saved in your picture tubes.

Choose the one you want to use. With the selection tool/ellipse and make a circle around it. Copy and paste as a new layer on your angel. Resize as needed. Do the same with the chain, You can use the pick tool to make your chain fit better at the neck.

8. Click on your stone. Effects/3D effects/Drop Shadow and use these settings: Vertical=3, Horizon=3, Opacity=50, Blur=10.00, Color=white. Do this again with the Horizontal and Vertical both at -3.

You may change your black background to a dark color that looks good to you, add stars, sparkles or anything you like.

I hope you enjoyed making this birthstone angel with Paint Shop Pro. Thanks to Deb Dehaven and Mary Lou White.

Pauline S Lane (DABP)

